



Skills  
Training &  
Engineering  
Services Pty Ltd

## CAPABILITY STATEMENT

*“We have an excellent reputation amongst our clients for outstanding quality, performance, service and safety initiatives. We take pride in introducing STES to you as one of the most capable, professional and reliable companies in the safety and training industry.”*



# SKILLS TRAINING & ENGINEERING SERVICES

## How Can We Help?

Skills Training & Engineering Services was established in 1999, and is a registered training organisation (RTO WA 50091). All trainers and facilitators at STES have years of experience in the areas of coaching, training, safety, supervision, engineering & environment, with a strong focus on developing and implementing safety programs, policies and procedures. Our Assessors are all WorkSafe WA qualified, and have all achieved a minimum Certificate IV in Training & Assessment.

STES has a commitment to safety and customer service. We pride ourselves on working with businesses to develop, implement and further improve on various aspects of their safety and training programs to achieve zero harm throughout their organisations. STES also aims to ensure all staff in these businesses are kept informed of up-to-date training requirements and state legislation.



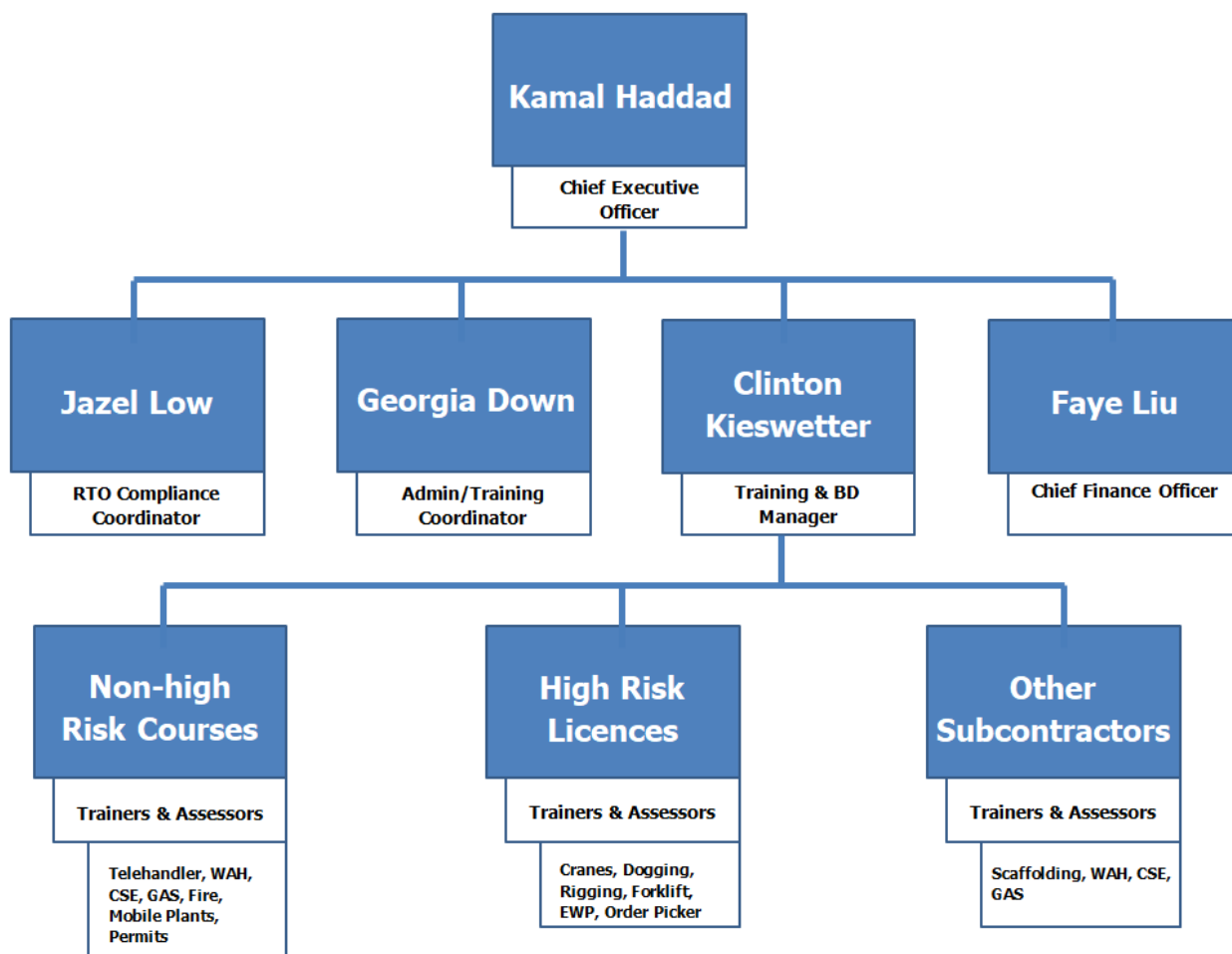
## Proven Experience

STES has worked with various industry key players and respective contractors within the mining / construction sectors, including (but not limited to):

- Elizabeth Quay
- Rio Tinto West Angelas Construction
- Pluto Gas Project
- ALCOA Pinjarra
- Wagerup Mine Project Iluka Resources
- Devils's Creek Karratha
- Sino Iron Project
- Windimurra Vanadium Project
- Nelson Point Port Hedland
- Ore Body 24
- Karara
- Ravensthorpe Nickel Project
- Jimblebar Project
- Borrow Island Gas Project
- Cape Lambert
- Western Turner

# SKILLS TRAINING & ENGINEERING SERVICES

## STES Key Personnel



Name	Key personnel contact details
Kamal Haddad	kamal@stes.com.au
Georgia Down	info@stes.com.au
Faye Liu	accounts@stes.com.au
Clinton Kieswetter	clinton@stes.com.au
Jazel Low	rto@stes.com.au
Others	info@stes.com.au / admin@stes.com.au

The Trainers & Assessors are qualified WorkSafe WA Assessors. The business owner, Kamal, is a WorkCover injury management coordinator / safety advisor with more than 20 years experience in the mining and construction related industry.

We have access to many trainers whom we engage when specialised training need arises.

# SKILLS TRAINING & ENGINEERING SERVICES



RTO#50091

Scope of Delivery  
(as on Aug 2021)

## High Risk Licence

- CPCCLDG3001 Licence to perform dogging
- CPCCLHS3002 Licence to operate a materials hoist
- CPCCLRG3001 Licence to perform rigging basic level
- CPCCLRG3002 Licence to perform rigging intermediate level
- CPCCLRG4001 Licence to perform rigging advanced level
- CPCCLSF2001 Licence to erect, alter and dismantle scaffolding basic level
- CPCCLSF3001 Licence to erect, alter and dismantle scaffolding intermediate level
- TLILIC0002 Licence to operate a vehicle loading crane (>10m T)
- TLILIC0003 Licence to operate a forklift truck
- TLILIC0004 Licence to operate an order picking forklift truck
- TLILIC0005 Licence to operate a boom-type EWP (>11m)
- TLILIC0008 Licence to operate a non-slewing mobile crane (>3T)
- TLILIC0010 Licence to operate a slewing mobile crane (up to 20T)
- TLILIC0013 Licence to operate a slewing mobile crane (up to 60T)
- TLILIC0014 Licence to operate a slewing mobile crane (up to 100T)
- TLILIC0015 Licence to operate a slewing mobile crane (over 100T)





# SKILLS TRAINING & ENGINEERING SERVICES



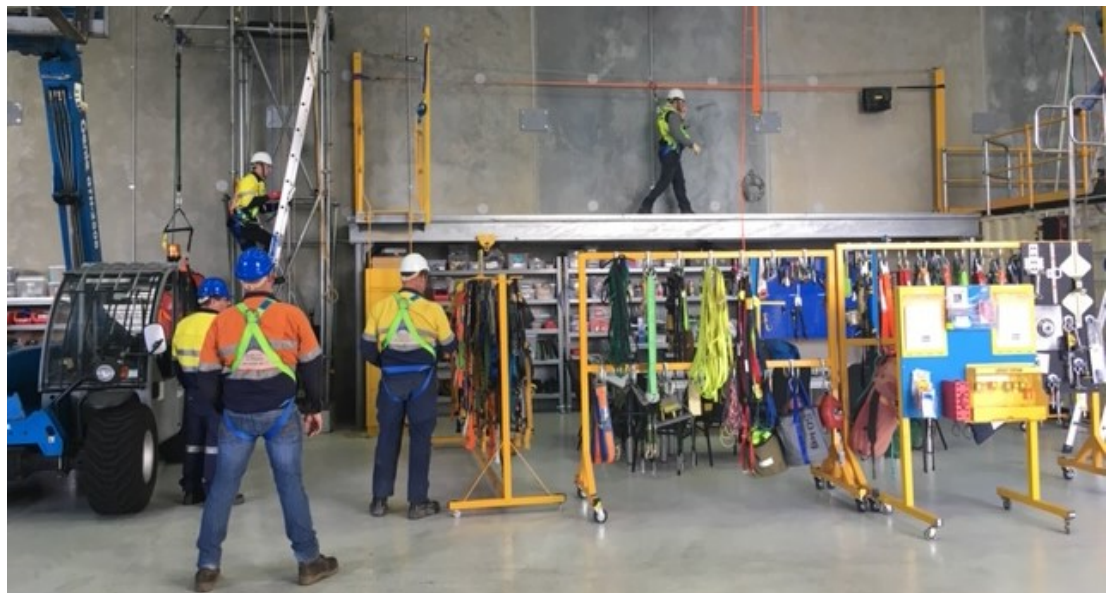
RTO#50091

Scope of Delivery  
(as on Aug 2021)

## Non-High Risk Licence

### Safety Courses

- CPCCCM1016 Identify requirements for safe tilt-up work
- CPCCWHS1001 Prepare to work safely in the construction industry
- CPPFES2005 Demonstrate fire attack firefighting equipment
- MSMWSH216 Operate breathing apparatus
- MSMWHS217 Gas test atmospheres
- PMBWELD301E Join polyethylene plastic pipelines using butt welding
- PMBWELD302E Join polyethylene plastic pipelines using electrofusion welding
- PUAFER005 Operate as part of an emergency control organisation
- RIIWHS202E Enter and work in confined spaces
- RIIWHS204EE Work safely at heights
- RIIVEH201E Operate light vehicle
- RIIVEH305F Operate and maintain a four wheel drive vehicle
- TLIA1001 Secure cargo
- TLID2004 Load and unload goods/cargo
- UETTDRRF06 Perform rescue from a live LV panel



# SKILLS TRAINING & ENGINEERING SERVICES



RTO#50091

Scope of Delivery  
(as on Aug 2021)

## Non-High Risk Licence

### Loadshifting Courses

- RIICBS316 Conduct pavement sweeping operations
- RIIHAN301E Operate elevating work platform
- RIIHAN305D Operate a gantry or overhead crane
- RIIHAN308F Load and unload plant
- RIIHAN309F Conduct telescopic materials handler operations
- RIIHAN311F Conduct operations with integrated tool carrier
- RIIMPO205E Operate roller/compactor
- RIIMPO206D Conduct bulk water truck operations
- RIIMPO301E Conduct hydraulic excavator operations
- RIIMPO304E Conduct wheel loader operations
- RIIMPO308F Conduct tracked dozer operations
- RIIMPO310F Conduct grader operations
- RIIMPO337E Conduct articulated haul truck operations
- RIIMPO338E Conduct rigid haul truck operations
- RIIMPO318F Conduct skid steer loader operations
- RIIMPO319E Conduct backhoe/loader operations
- RIIMPO337E Conduct articulated haul truck operations
- RIIMPO338E Conduct rigid haul truck operations



# SKILLS TRAINING & ENGINEERING SERVICES



RTO#50091

Scope of Delivery  
(as on Aug 2021)

## Non-High Risk Licence

### Health Training Course

- HLTAID011 Provide First Aid
- HLTAID010 Provide basic emergency life support
- HLTAID009 Provide cardiopulmonary resuscitation

### Permit Courses

- MSMPER200 Work in accordance with an issued permit
- MSMPER201 Monitor & control work permits
- MSMPER205 Enter confined space
- MSMPER300 Issue work permits
- MSMWHS201 Conduct hazard analysis

Refer to [Training.gov.au](http://Training.gov.au) website (RTO 50091) for our Full Scope.





# SKILLS TRAINING & ENGINEERING SERVICES

## Our Training Facility

Our purpose-built training centre has climate controlled classrooms, which can accommodate 46 candidates at capacity. We have a fully equipped lunch room with TV, fridges, microwaves and dishwashers. We can also do catering for groups on request. Our training area has a roof height of 10m to facilitate indoor training should bad weather be an issue.



## On-Site Training

Many companies prefer their training to be conducted “on-site”, in order to allow candidates to receive their training in a real work environment. STES offers on-site training for ALL our courses, provided the workplace has the equipment required. STES also conduct Verification of Competency (VOC) on site.



## Where To From Here?

If you have any questions regarding the training that STES can provide, or if you would like to discuss the prices etc, please call us on **(08) 9418 8555**, or email us at **[info@stes.com.au](mailto:info@stes.com.au)**

Once you decide to go ahead with any training modules with STES, we will work with your organisation to schedule in suitable dates, times and training facilities.

Training attendance and feedback will be obtained from participants and forwarded to your organisation (upon request). Further to this, all course participants will be awarded the nationally accredited certificates (and for certain courses, a wallet card) as a record of their training.

We look forward to being of assistance to your organisation in the near future!



# SKILLS TRAINING & ENGINEERING SERVICES

## Price List (Aug 2021)

These prices are per person for training held in the metropolitan area (either at the work place or at our training facility). Prices are negotiable for group bookings—all prices listed here are the individual price. **Day rates and group packages are available. We also offer discounts for multiple courses.**



Courses	Duration	Cost per person	Max. Number
TLILIC0005 Licence to Operate a Boom-type Elevating Work Platform (boom length 11 metres or more)	2 Days	\$450	8
TLILIC0003 Licence to Operate a Forklift Truck	2 Days	\$450	8
TLILIC0004 Licence to Operate an Order Picking Forklift Truck	2 Days	\$450	8
CPCCLDG3001 Licence to Perform Dogging	4 Days	\$900	8
CPCCLRG3001 Licence to Perform Rigging Basic Level	4 Days	\$900	8
CPCCLRG3002 Licence to Perform Rigging Intermediate Level	4 Days	\$900	8
CPCCLSF2001 Licence to Erect, Alter and Dismantle Scaffolding Basic Level	5 Days	\$900	8
Slewing & Non-Slewing Cranes (all classes)	TBA	Upon request	8
MSMWHS216 Operate Breathing Apparatus	6 Hours	\$300	8 - 10
MSMWHS217 Gas Test Atmospheres	6 Hours	\$180	8 - 10
RIIWH204E Work Safely at Heights	1 Day	\$250	8 - 10
RIIWH202E Confined Space Entry	1 Day	\$250	8 - 10
CPPFES2005 Demonstrate First Attack Firefighting Equipment	6 Hours	\$150	8
CPCCWHS1001 Prepare to Work Safely in the Construction Industry (White Card)	6 Hours	\$100	10 - 12
RIIHAN301E Operate Elevating Work Platform [Scissor / Boom Lift]	1 Day	\$275 to \$350	8
RIIHAN305D Operate a Gantry or Overhead Crane	1 Day	\$300	8
RIIHAN309F Conduct Telescopic Materials Handler Operations	1 Day	\$400	8

# SKILLS TRAINING & ENGINEERING SERVICES

## Price List (Aug 2021)



Courses (On-site)	Duration	Cost per person	Max. Number
Loadshifting Courses (Skid Steer, Hydraulic Excavator, Front End Loader, Integrated Tool Carrier, Roller/Compactor, Backhoe, Bulk Water Truck, Tracked Dozer, Grader, Haul Trucks)	2 Days	\$550	8
RIIVEH201E Operate a light vehicle	1 Day	\$300	8
RIIVEH305F Operate and maintain a 4WD vehicle	1 Day	\$350	8
RIIVEH201E & RIIVEH305F	1 Day	\$450	8
Load Restraint TLIA1001 Secure Cargo & TLID2004 Load and Unload Goods / Cargo	1 Day	\$350	8
PMBWELD301E & PMBWELD302E Polywelding	1 Day	\$750	8
UETTDRRF06 & HLTAID009 Perform Rescue from a Live LV Panel (including CPR)	1 Day	\$170	8
Verification of Competency (VOC)	-	\$250	-

**Skills Training & Engineering Services P/L**  
**STES RTO# 50091**

**27 Sphinx Way**  
**Bibra Lake WA 6163**

**P: 08 9418 8555 / 08 9418 8486**  
**M: 0427 089 714**  
**E: [info@stes.com.au](mailto:info@stes.com.au)**  
**Website: [stes.com.au](http://stes.com.au)**